

DL Agro Tractor Loader-Crane

Features of DL Agro Tractor Loader-Crane

The most important points of this tractor crane are:

- Hydraulic outriggers with increased supports area for safe work on any kind of surface
- Adjustable bushings ("side bearers") are used for smooth boom extension
- A check valve is installed on the drain line for operating valve protection.
- Shot blasting and powder painting of the loader crane metal structures
- Throttle valves are installed on the line of the hydraulic cylinders for the loader crane pillar smooth rotation adjustment
- The boom and pillar are made of steel S355J2H
- High pressure hoses protected by plastic protective spring
- Hydraulic cylinders with double acting hydraulic locks
- Closed type support bearings in a pillar rotation mechanism
- Towing hitch (loop) for transporting a trailer up to 6 tons with height adjustments

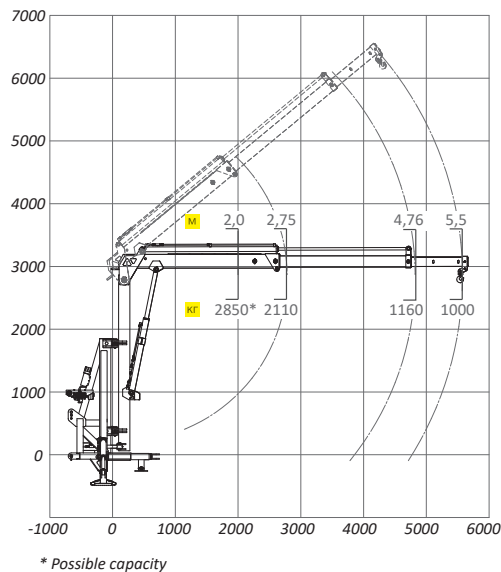
DL Agro Tractor Loader-Crane

Designed for loading and unloading of big bags with seeds, fertilizers, pallets of hay and straw, barrels etc., at field and for warehouse activities. In addition, it is used for construction and maintenance work.

DL Agro Tractor Loader Crane increases efficiency of using of any tractor and a trailer already available at farmyard.

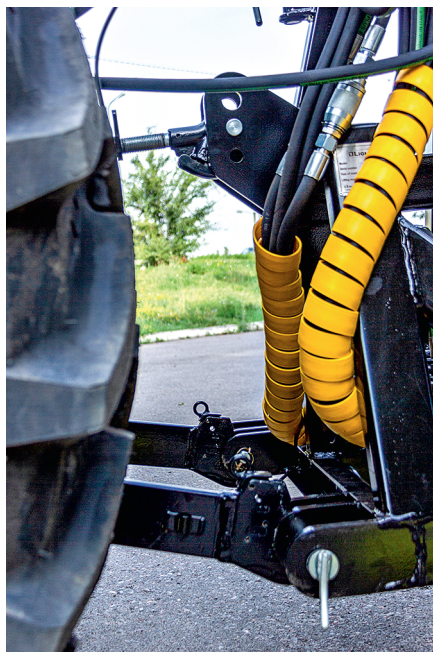
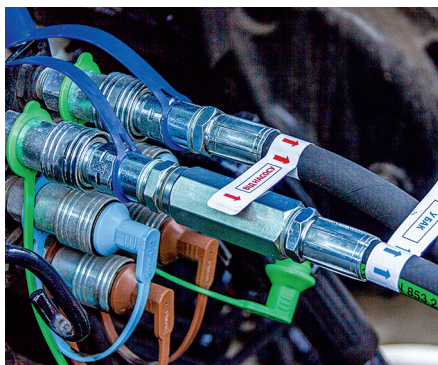


DL Agro Tractor Loader-Crane



Technical specifications

Max. boom extension, m	5,5
Load-lifting capacity at max. boom extension, kg	1000
Boom lifting height, m	6,7
Linkage type	3-point system
Rated pump delivery, L/min.	40
Working pressure, bar	160
Outriggers	Hydraulic
Trailer unit towing capability	Trailers (4-6 t)
Boom swing angle	160°
Unit mass, kg	1150
Overall dimensions (H x W x L), mm	3,130 x 1,900 x 1,580
Hydraulic locks, pcs.	6
5-section hydraulic distribution valve	pcs. 1
Working unit	Hook
Audio signal	+
Bulb level	+



www.dlwest.eu



web@dlwest.eu



+48 22 266 26 24